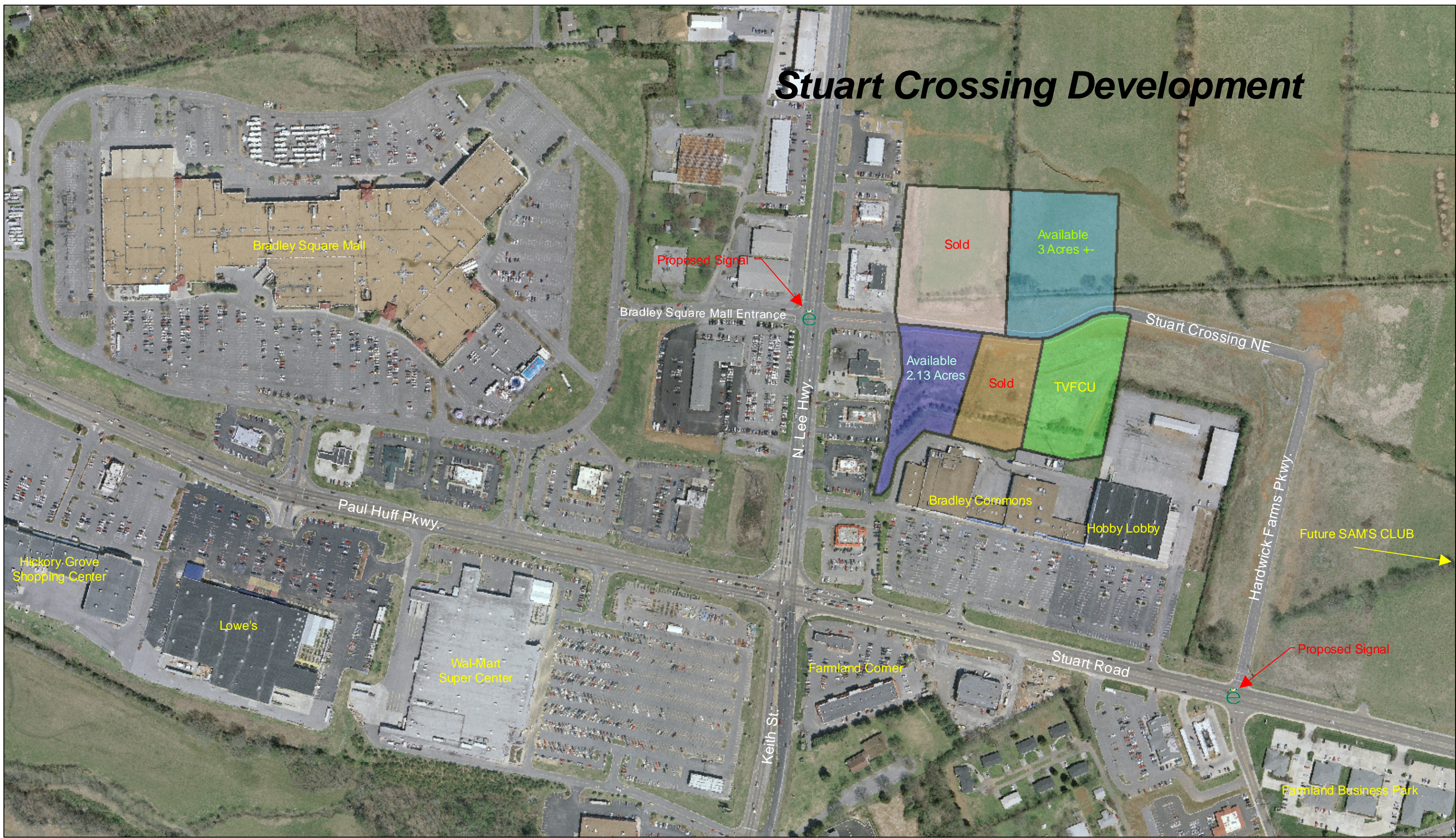


# Stuart Crossing Development



Bradley County makes no representation or warranty as to the accuracy of this map and the information contained within nor to its fitness for a particular purpose or use. The purchaser or user accepts this map on an "AS IS" basis and assumes all responsibilities for the use thereof. The user will assume the entire risk and agrees to hold Bradley County and its staff harmless of any liability resulting from any direct, indirect, incidental, special, consequential, or other damages, including loss of profit, arising out of the use of this map. The user is responsible for independent verification of all information contained on this map.

Scale: 1 inch equals 300 feet

**BRADLEY COUNTY**  
**ASSESSOR of PROPERTY**  
 155 Broad Street NW  
 Cleveland, TN 37311  
 Phone: 423-728-7125